

*Semper
paratus*

Rocket Mission Works
17 March 1970

Israeli F-5 Combat Trial

OVERALL CLASSIFICATION: SECRET



SITUATION

17 MAR- 08:00 L

Weather: Scattered Clouds @ 10 kft

- Strategic Situation
 - Syria has increased their hostile rhetoric as Israel has continued to plus up their military. Recently acquired SCUD B ballistic missiles have been observed in the southern Bekaa Valley, putting Tel Aviv in range. The Prime Minister has ordered the destruction of the SCUD TEL and missile.
- Current Focus
 - Israel is considering purchase of the F-5E platform to replace the A-4 Skyhawk in the ground attack role. It's superior air-to-air capabilities provide a multi-role capability that the Air Force is interested in. It has been decided that the F-5E will be the primary ground attack platform for this mission. They will be supported by DCA provided by F-4Es.

INTEL

Threat Assessment:

- Enemy aircraft last 24 Hr
 - Most common, least threatening: MIG-19
 - Most threatening, least common: MIG-21
- Enemy movements
 - Enemy ADA moving around the area to posture towards the border.
- Current threat assessment
 - Aircraft: MIG-21 @ Mezzeh
MIG-19 @ Al-Dumayr
 - AD: ADA in eastern valley

MISSION

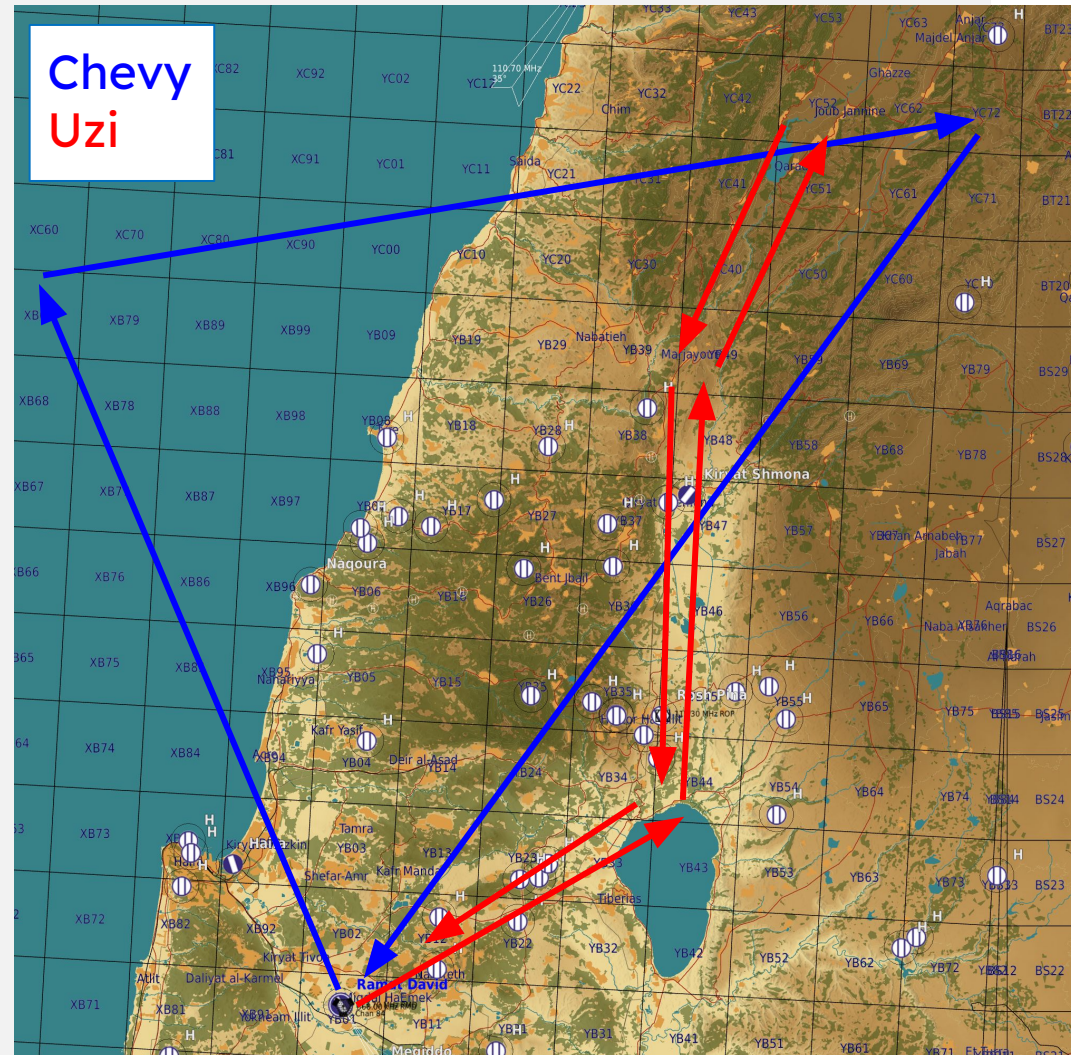
Commander's Intent: Destruction of SCUD missile and TEL.

- Brief
 - Strike on Syrian SCUD TEL to test the combat capabilities of the F-5E.
 - DCA will be provided by F-4Es.
 - Strike will be conducted using high-drag and cluster bombs to test F-5E.
- Targets
 - 1x SCUD TEL
- Friendly Assets
 - EWR- Whiplash (124 MHz)

ROUTE

ROE: Cleared to engage all threatening hostiles.

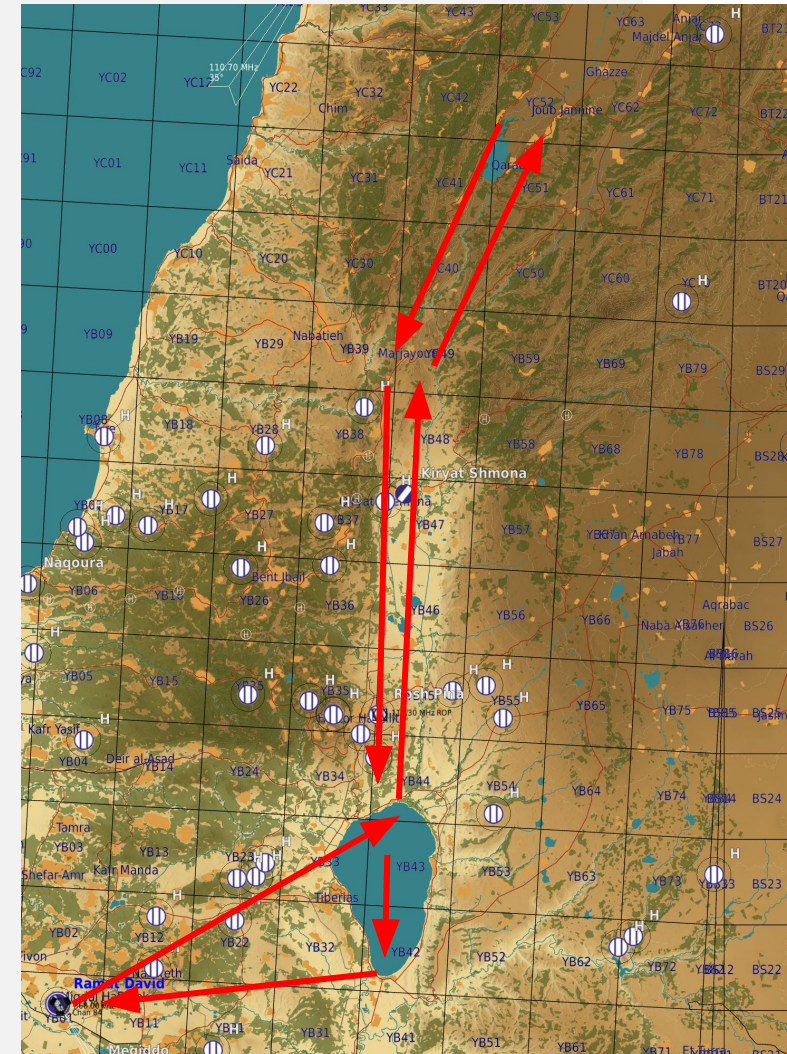
- Uzi and Chevy flights depart RWY 27.
 - Chevy flight fly to hold point at WP 2.
 - Uzi flight delay launch until Chevy feet wet mins, then fly to push point at WP 1.
- Uzi will conduct a low altitude strike on the SCUD battalion.
 - IP is WP 4 at exit of valley.
- Chevy flight will provide DCA for Uzi flight to conduct their strike.
 - Free to engage any fighters traveling west towards the target area.



ROUTE

Uzi Flight Markers

- Departure: 25 mi @ 60 deg (Top of Galilee)
- WP1: Sea of Galilee North: 30 mi @ 4 deg (Follow river)
- WP2: Eastern Valley: 11 mi @ 52 deg (Follow canyon)
- WP3: Valley Mid: 7 mi 20 deg (Left @ Comms Tower)
- WP4: IP: 4 mi @ 297 (Trees W of river, E of road)
- WP5: Target: 7 mi @ 219 deg (South of lake)
- WP6: Western Valley: 7 mi @ 209 deg (Follow river)
- WP7: Valley Exit: 40 @ 183 deg (South of Galilee)
- WP8: Sea of Galilee South: 20 @ 265 deg
- WP9: Ramat David

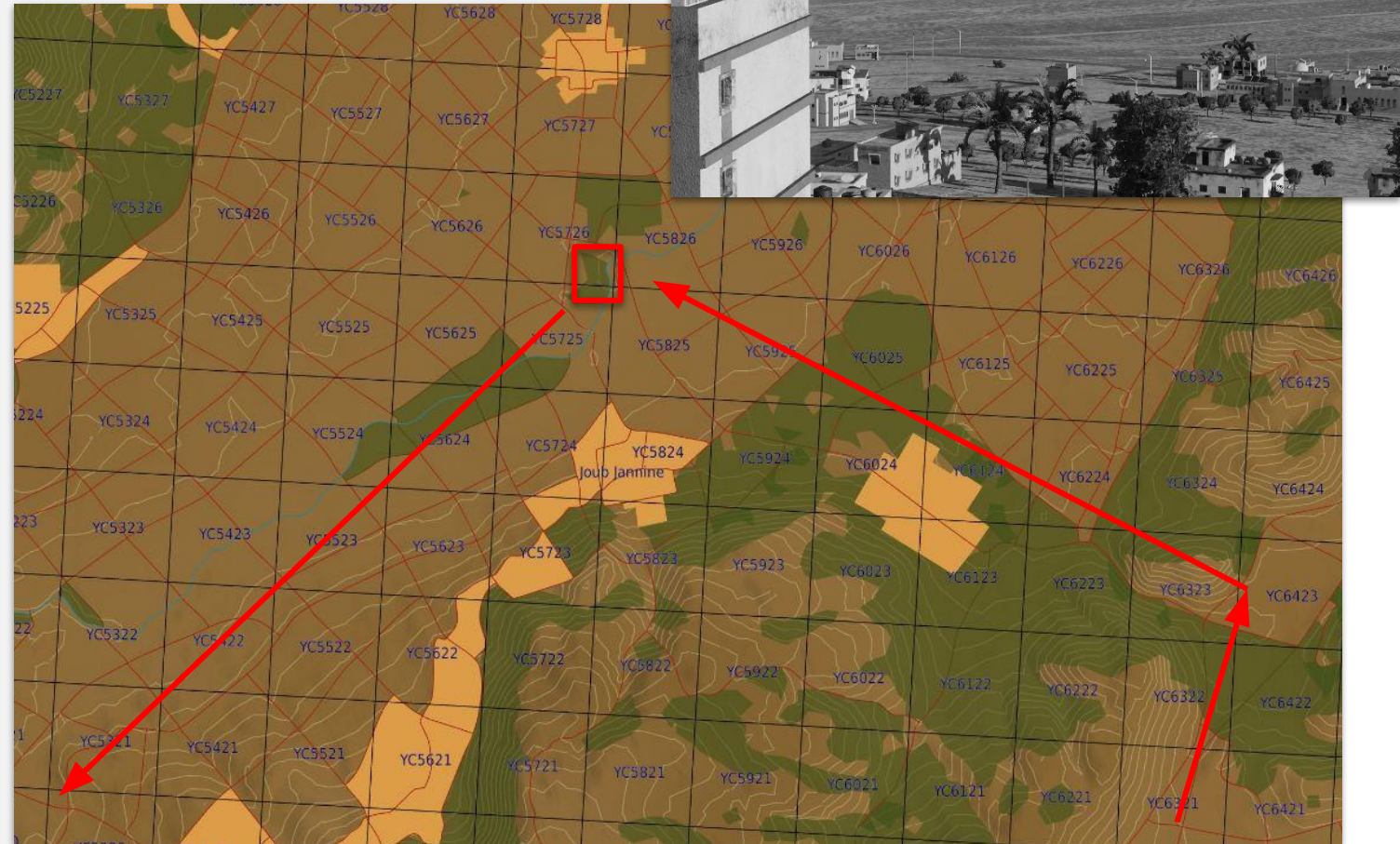


TARGET

Primary: SCUD TEL Secondary: SCUD Battalion

Targeting parameters

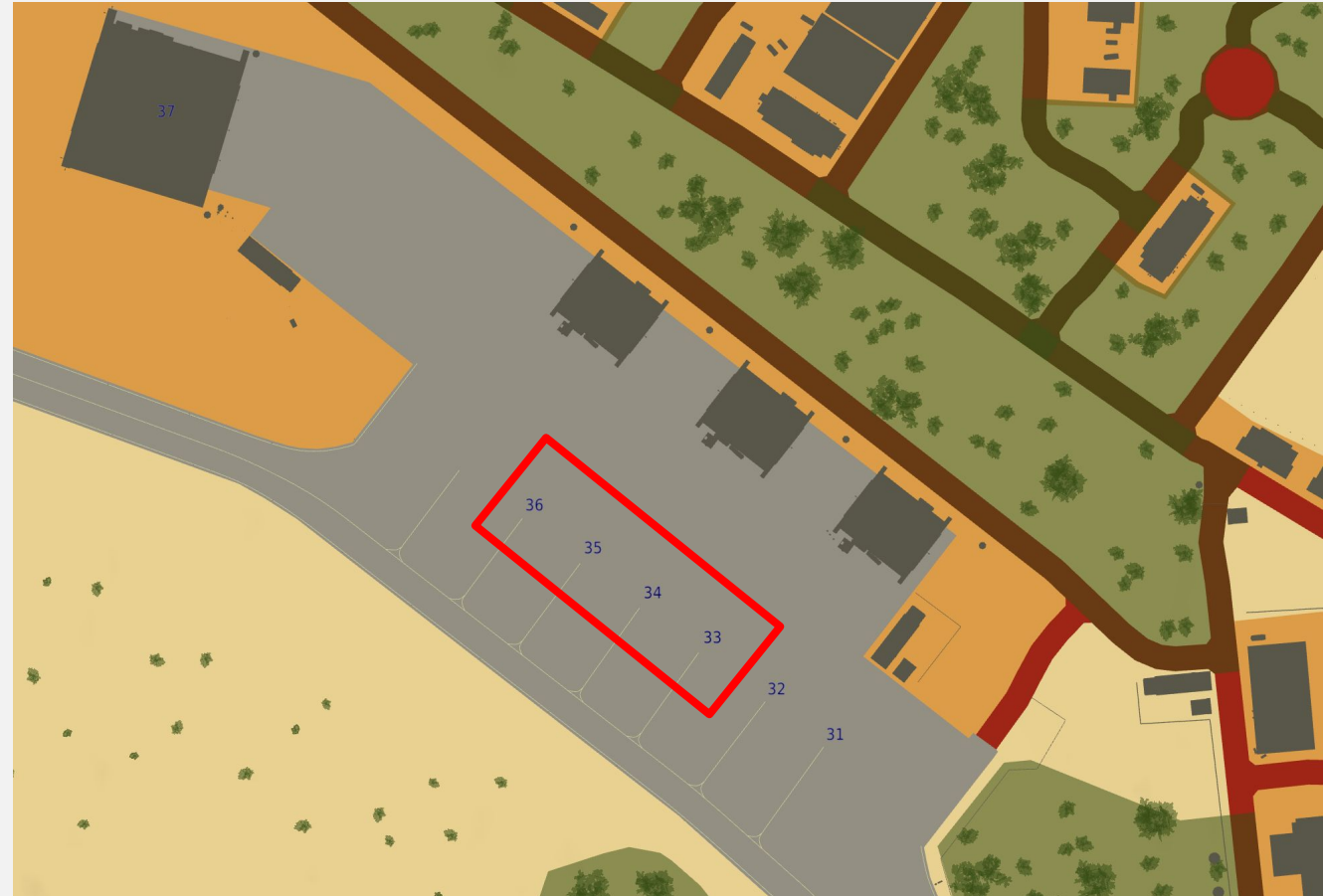
- **Mk-82 Snakeye**
 - HDG: 300
 - Dive Angle: 10
 - Rel Alt: 3000 ft MSL
 - Vel: 400 TAS
 - Depression: 96 Mils
 - External Stores: RIPL
 - Interval: .10
- **M151**
 - HDG: 300
 - Dive Angle: 15 deg
 - Rel Alt: 4000
 - Vel: 400 TAS
 - Depression: 36 Mils
 - External Stores: RKT



DOMESTICS

Ramat David

- QFE: 29.78
- TACAN: 84X
- Radio: 113.70 MHz
- Parking location:
 - UI 1-1: 36
 - UI 1-2: 35
 - CY 1-1: 34
 - CY 1-2: 33



LOADOUTS

Uzi Package Winds: 8 kts @ 229

- Uzi 1-1
 - 2x AIM-9P
 - 5x Mk-82 Snakeye
 - 2x Fuel Tanks
- Uzi 1-2
 - 2x AIM-9P
 - 2x M151 HE
 - 2x Fuel Tanks

Chevy Package Winds: 8 kts @ 229

- Chevy 1
 - 3x AIM-7E
 - 4x AIM-9L
 - 1x ALQ-131
 - 2x Fuel Tanks

QUESTIONS

